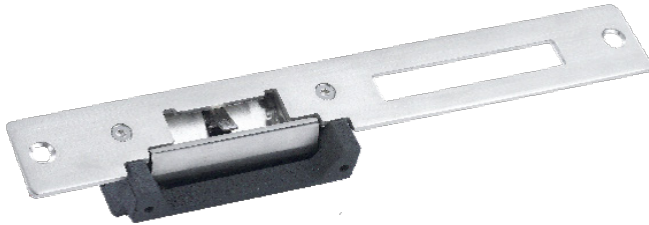


# ASF705

## Electric Strike lock



### Features

- An-ti pull 500kg
- Special design, the lock bolt can adjust the distance
- Especially suitable for the metal frame hole installed directly
- 100,000 times aging test qualified
- The surface temperature of the lacquer that bake, durable and beautiful

### Technical Specification

#### Electronic

Working voltage	DC12V
Working current	320mA
State Output	yes

#### General

Applications	Wooden door, metal door, PVC door, etc
Material	Stainless steel precision casting
Anti-pull	500kg
Dimensions	250*25*35mm
Weight	0.42kg

#### Working Environment

Working temperature	-30°C~+60°C
Working humidity	≤95%

### Dimensions

